

Tourist Information Lohr am Main

Schlossplatz 5
97816 Lohr am Main

Tel: +49 9352 848465

tourismus@lohr.de
<http://www.lohr.de>

Information for visually impaired and blind people

Information on accessibility was evaluated and verified on October 9, 2024 as part of the quality criteria / system "Tourism for all".

Images of the building/object



Tourist Information
Lohr am Main

©Julia Marmulla



Tourist Information
Lohr am Main

©Julia Marmulla

Parking lot for people with disabilities



Parking lot for people
with disabilities

©Gisela Moser

Parking lot for people with disabilities



Parking lot for people
with disabilities

©Gisela Moser



Parking lot for people
with disabilities

©Julia Marmulla

There is a general parking lot available.

There is at least one parking space for people with disabilities.

There is/are 1 parking space(s) for people with disabilities.

Parking space width: 400 cm

Parking space length: 500 cm

Distance from the parking space(s) for people with disabilities to the entrance area: 60 m

The parking space(s) for people with disabilities is/are marked.

Additional information only available in German: The car park is located in the street 'Schloßplatz' in front of house number 12. There is a sign for residents' parking. According to the tourist information office, the car parking space for people with disabilities is excluded from this.

Path from the parking lot for people with disabilities to the tourist information office



Path from the parking lot for people with disabilities to the tourist information office

©Gisela Moser



Path from the parking lot for people with disabilities to the tourist information office

©Gisela Moser



Path from the parking lot for people with disabilities to the tourist information office

©Gisela Moser

Width of the path: 200 cm

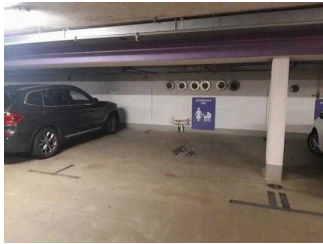
Length of the path: 60 m

There is no sidewalk marking.

Additional information only available in German: The path runs without a sidewalk across a play street (walking speed).

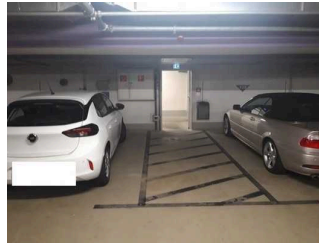
Additional parking in the underground car park

Additional parking in the underground car park – floor 5



Additional parking in the underground car park – floor 5

©Julia Marmulla



Additional parking in the underground car park – floor 5

©Julia Marmulla

There is a general parking lot available.

There is an underground car park directly below the tourist information office, but without parking spaces for people with disabilities. On floor 5 (1 floor below the TI) there are wider parking spaces for people with children (370 x 500 cm). The route from the car park is the same as from the WC area. In addition, a passageway must be passed. This passageway is 90 cm wide. The underground car park is due to be renovated soon (as of October 2024).

Stairs from floor 5 of the underground car park to the tourist information office



Stairs from floor 5 of the underground car park to the tourist information office

©Julia Marmulla



Stairs from floor 5 of the underground car park to the tourist information office

©Julia Marmulla

Existing thresholds/steps: 22

The height of the thresholds/steps: 17 cm

The stairs are not straight.

The staircase has handrails on both sides.

The handrails are not horizontally extended at the beginning and at the end of the staircases.

There is no tactile information about the floor available at the beginning and end of the flights of stairs.

The steps are not visually rich in contrast.

There is no visual contrast between the flooring and the stairways.

There is no tactile contrast between the flooring and the stairways.

The stairs are well lit and glare-free.

Elevator from floor 5 to the tourist information office



Elevator from floor 5 to the tourist information office

©Julia Marmulla



Elevator from floor 5 to the tourist information office

©Gisela Moser



Elevator from floor 5 to the tourist information office

©Gisela Moser

The elevator is well lit and glare-free.

There is no horizontal control panel.

The operating controls and the signage are not visually rich in contrast.

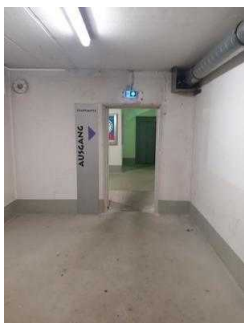
The operating controls and the signage are tactilely detectable.

There is no signposting available.

The break position is not announced by spoken commands.

Corridor/way/aisle inside

Corridor on floor 5 of the underground car park



Corridor on floor 5 of the underground car park

©Julia Marmulla



Corridor on floor 5 of the underground car park

©Julia Marmulla

Length of the corridor/way/aisle: 15 m

There are no hindrances, e.g. objects protruding into the path.

Corridor in the entrance area: round arch – lift/stairs to the underground car park – tourist information office



Corridor in the entrance area: round arch – lift/stairs to the underground car park – tourist information office

©Julia Marmulla



Corridor in the entrance area: round arch – lift/stairs to the underground car park – tourist information office

©Julia Marmulla



Corridor in the entrance area: round arch – lift/stairs to the underground car park – tourist information office

©Julia Marmulla

Length of the corridor/way/aisle: 15 m

There are no hindrances, e.g. objects protruding into the path.

Bus stop hospital



Bus stop hospital

©Julia Marmulla

Bus stop hospital



Bus stop hospital

©Julia Marmulla



Bus stop hospital

©Julia Marmulla



Bus stop hospital

©Julia Marmulla



Bus stop hospital

©Julia Marmulla

Distance from the train/bus platform/ship pier to the entrance area for people with disabilities: 170 m

There are no visually high-contrast ground indicators (e.g. guide strips) available.

There are no tactile ground indicators (e.g. guide strips) available.

There is written train/bus platform/ship pier information available.

There is no audible train/bus platform/ship pier information available.

Way from the bus stop to the tourist information office



Way from the bus stop to the tourist information office

©Julia Marmulla



Way from the bus stop to the tourist information office

©Julia Marmulla



Way from the bus stop to the tourist information office

©Julia Marmulla



Way from the bus stop to the tourist information office

©Julia Marmulla



Way from the bus stop to the tourist information office

©Julia Marmulla



Way from the bus stop to the tourist information office

©Julia Marmulla

Width of the path: 180 cm

Length of the path: 170 m

There is no sidewalk marking.

Entrance



Entrance

©Julia Marmulla



Entrance

©Julia Marmulla

Entrance round arch



Entrance round arch

©Julia Marmulla



Entrance round arch

©Julia Marmulla



Entrance round arch

©Gisela Moser

The entrance area is not visually contrasted to its surrounding area.

The entrance area is not recognizable by a tactile change of floor covering.

Corridor in the entrance area: round arch – lift/stairs to the underground car park – tourist information office



Corridor in the entrance area: round arch – lift/stairs to the underground car park – tourist information office

©Julia Marmulla



Corridor in the entrance area: round arch – lift/stairs to the underground car park – tourist information office

©Julia Marmulla



Corridor in the entrance area: round arch – lift/stairs to the underground car park – tourist information office

©Julia Marmulla

Length of the corridor/way/aisle: 15 m

There are no hindrances, e.g. objects protruding into the path.

Consultation room Tourist Information



Consultation room
Tourist Information

©Gisela Moser

Consultation room Tourist Information



Consultation room
Tourist Information

©Julia Marmulla



Consultation room
Tourist Information

©Gisela Moser



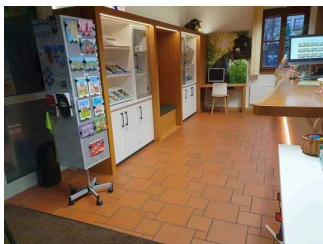
Consultation room
Tourist Information

©Gisela Moser



Consultation room
Tourist Information

©Gisela Moser



Consultation room
Tourist Information

©Gisela Moser

Door to the room

Type of door: single leaf

The door is opened without using any force (lever handle, light barrier sensor, motion detector, etc.).

The door or door frame is visually contrasted to its surroundings.

Glass doors are not marked with safety markings.

The WIDTH of the room: 4 m

The DEPTH of the room: 7 m

There are no hindrances, e.g. protruding objects present in the room.

Consulting counter



Consulting counter

©Gisela Moser

Consulting counter



Consulting counter

©Gisela Moser



Consulting counter

©Julia Marmulla

The walkway from the entrance door to the counter is not marked with visually contrasting markings (e.g. carpet).

The walkway from the entrance door to the counter is not marked by tactile markings (e.g. floor indicators).

Public WC for people with disabilities in the underground car park, floor 5



Public WC for people with disabilities in the underground car park, floor 5

©Gisela Moser



Public WC for people with disabilities in the underground car park, floor 5

©Gisela Moser

Public WC for people with disabilities in the underground car park, floor 5



Public WC for people with disabilities in the underground car park, floor 5

©Gisela Moser



Public WC for people with disabilities in the underground car park, floor 5

©Gisela Moser



Public WC for people with disabilities in the underground car park, floor 5

©Julia Marmulla

Door to public toilet

Type of door: single leaf

The door is opened requiring the users own effort.

The door or door frame is not visually contrasted to its surroundings.

Stairs from floor 5 of the underground car park to the tourist information office



Stairs from floor 5 of the underground car park to the tourist information office

©Julia Marmulla



Stairs from floor 5 of the underground car park to the tourist information office

©Julia Marmulla

Existing thresholds/steps: 22

The height of the thresholds/steps: 17 cm

The stairs are not straight.

The staircase has handrails on both sides.

The handrails are not horizontally extended at the beginning and at the end of the staircases.

There is no tactile information about the floor available at the beginning and end of the flights of stairs.

The steps are not visually rich in contrast.

There is no visual contrast between the flooring and the stairways.

There is no tactile contrast between the flooring and the stairways.

The stairs are well lit and glare-free.

Elevator from floor 5 to the tourist information office



Elevator from floor 5 to the tourist information office

©Julia Marmulla



Elevator from floor 5 to the tourist information office

©Gisela Moser



Elevator from floor 5 to the tourist information office

©Gisela Moser

The elevator is well lit and glare-free.

There is no horizontal control panel.

The operating controls and the signage are not visually rich in contrast.

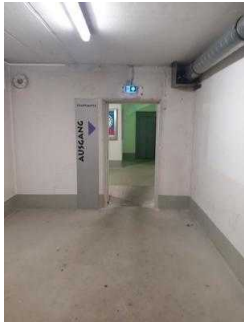
The operating controls and the signage are tactilely detectable.

There is no signposting available.

The break position is not announced by spoken commands.

Corridor/way/aisle inside

Corridor on floor 5 of the underground car park



Corridor on floor 5 of the underground car park

©Julia Marmulla



Corridor on floor 5 of the underground car park

©Julia Marmulla

Length of the corridor/way/aisle: 15 m

There are no hindrances, e.g. objects protruding into the path.

Corridor in the entrance area: round arch – lift/stairs to the underground car park – tourist information office



Corridor in the entrance area: round arch – lift/stairs to the underground car park – tourist information office

©Julia Marmulla



Corridor in the entrance area: round arch – lift/stairs to the underground car park – tourist information office

©Julia Marmulla



Corridor in the entrance area: round arch – lift/stairs to the underground car park – tourist information office

©Julia Marmulla

Length of the corridor/way/aisle: 15 m

There are no hindrances, e.g. objects protruding into the path.

Door to the WC anteroom



Door to the WC anteroom

©Julia Marmulla

Type of door: single leaf

The door is opened requiring the users own effort.

The door or door frame is not visually contrasted to its surroundings.

Alarm/Auxiliary

Alarm/Auxiliary

Assistance dogs (companion dogs, guide dogs etc.) are allowed in all relevant areas/rooms of the establishment/offer.

Aids are offered.

Reading aids (reading glasses, magnifying glasses, etc.),

Visual tactile design



Visual tactile design

©Julia Marmulla

Visual and tactile design



Visual and tactile design

©Julia Marmulla



Visual and tactile design

©Julia Marmulla



Visual and tactile design

©Julia Marmulla



Visual and tactile design

©Julia Marmulla



Visual and tactile design

©Julia Marmulla



Visual and tactile design

©Julia Marmulla

Guided tours

Guided tours

A reservation for the guided tour is necessary.