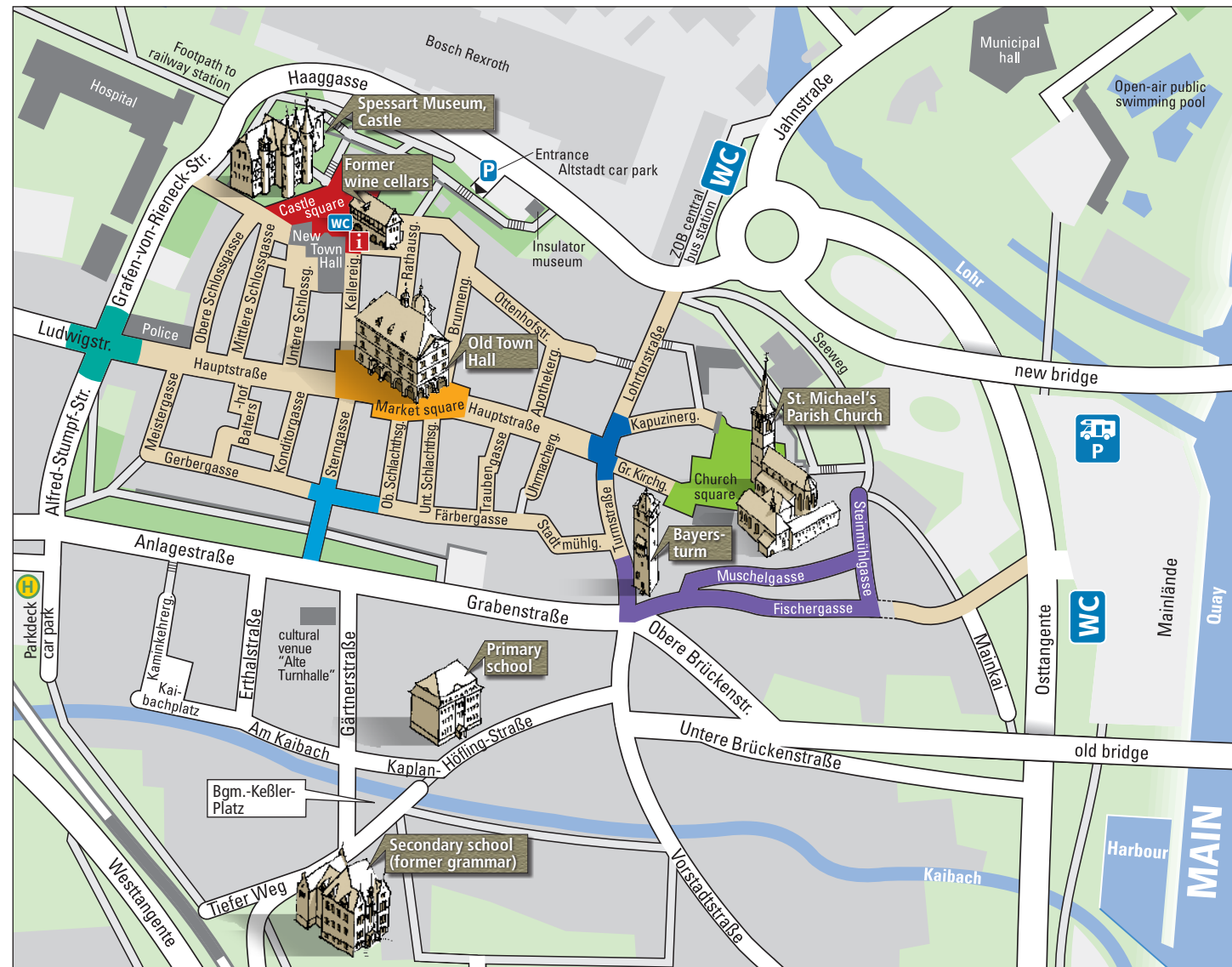


**Guided tours**

**Costume tours**



**A walk with the washerwoman**

Lend an ear as the washerwoman tells of the toils and trials of simple folk of yore. She'll no doubt pass a few fine folk through the mangle, too!



**A promenade with the Lady Mayor**

Keep the Lady Mayor company on one of her afternoon strolls, and wander with her through the streets of 19th century Lohr, when Bavaria was still a kingdom.

These give an insight into both past and present. Also available in English, French or Spanish. **Can be booked through Tourist Information in Lohr. Tel. 0049 (0) 93 52 / 19 433 E-mail: [tourismus@lohr.de](mailto:tourismus@lohr.de)**

**The museums**



**Spessart Museum in the castle**

Opening hours: Tue - Sat 10 a.m. to 4 p.m. Sundays and holidays: 10 a.m. to 5 p.m.

**School Museum in Sendelbach**

Opening hours: Wed. to Sun. 2 p.m. to 4 p.m.

**Insulator Museum in old transformer house:**

Opening hours: 1<sup>st</sup> Sunday in month from 2 p.m. to 5 p.m. or by arrangement



**The baker's wife tells her tale**

On this tour it is the baker's wife who will guide you through 17th century Lohr: the age of the Renaissance, the Thirty Years War, and the persecution of witches and witch-masters.



**An evening stroll with the night watchman**

Accompany the night watchman on his not entirely safe rounds through the narrow, dark alleys of 17th century Lohr.

**TOURISTINFORMATION**

Schlossplatz 5 · 97816 Lohr a. Main

Telefon: 09352 - 19433

Telefax: 09352 - 70295

E-Mail: [tourismus@lohr.de](mailto:tourismus@lohr.de)



Lohr a. Main

**P** Our free car park map gives detailed information on parking in Lohr am Main.

**WC** WC/disabled toilets: Mainlände, Altstadt underground car park, "ZOB" (central bus station), Neues Rathaus (new Town Hall)



# A walk through the old town



The municipal coat of arms



Snow White of Lohr



## Area I Kirchplatz (Church square)

- Former graveyard with stone crucifix. St. Michael's R.C. parish church – basilica with pier-arches built 13<sup>th</sup> – 15<sup>th</sup> centuries on site of earlier churches. Romanesque vestry. Tower dates from 1496 (61m high). Late Gothic choir with impressive epitaphs to Counts of Rieneck of 15<sup>th</sup>/16<sup>th</sup> centuries. Font dates from 1488. Early Baroque choir stalls by Valentin Mahler of Lohr, 1654. Neo-Gothic altars built 1890 – 1905 by Franz Wilhelm Driesler of Lohr.
- Kirchplatz 5/6: graveyard chapel (1416) and charnel house (ossuary). "Latin School" from 16<sup>th</sup> to beginning of 20<sup>th</sup> century.
- Kirchplatz 8: original castle and keep of Counts of Rieneck, High Middle Ages. Converted into Capuchin monastery and St. Joseph's Church 1651 – 1664. "Bruder Konrad Haus" from 1977, housing church organisations.
- Kirchplatz 9: former school for girls. Built in Classical style in 1819, today adult education centre and music school.
- Kirchplatz 3: former chaplaincy. Ground floor built 15<sup>th</sup>/16<sup>th</sup> centuries, first floor 18<sup>th</sup> century. Adjoined is 15<sup>th</sup> century former gate in churchyard ramparts, with Gothic niche.

## Area II Junction of Hauptstrasse, Turmstrasse and Lohrtorstrasse

- Lohrtorstrasse 2: Hotel-Gasthof Krone, Lohr's oldest inn, with a Renaissance portal dating from 1589.
- Turmstrasse 1: elaborate half-timbered building with decorative corner posts, 1590.
- Hauptstrasse 2: elaborate half-timbering dating from 1559.
- Hauptstrasse 3/5: Late Gothic semi-detached building.

## Area III Market square

- Old Town Hall: prestigious building built 1599 – 1601 by Michael Imkeller of Lohr. Ground floor originally open market hall, closed in at beginning of 19<sup>th</sup> century. Today a venue for concerts, cabaret, lectures, and exhibitions. Ridge turret with gilded statue of Lady Justice. Town council and administration convened here until 1985. Cultural and educational centre of the town since its renovation in 1989.
- Hauptstrasse 19 – 27: "painters' corner". Ensemble of half-timbered buildings with carved corner posts, and tavern sign with gilded eagle.
- Oberer Marktplatz: "coins fountain" (1984) at Sparkasse on upper market square shows "Lohrer Pfennig", "Mainzer Taler", Bavarian crown and ducats.
- Unterer Marktplatz: "Fairytale fountain" built in 1936 by local sculptor Hermann Amrhein, inspired by the Grimms' fairytale "Brother and Sister"; marketplace crucifix at the Old Town Hall.

## Area IV Schlossplatz (Castle square)

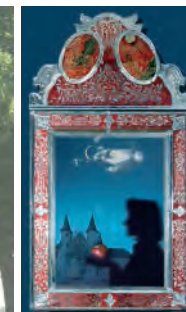
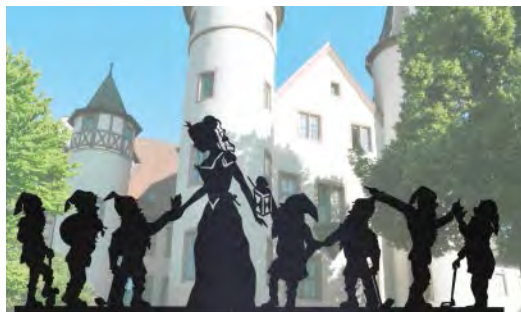
The Counts of Rieneck and later the officials of the Prince-Electors of Mainz held court around the Schlossplatz.

- Castle: residence of Counts of Rieneck from 14<sup>th</sup> century, and officials of Prince Electors of Mainz from 1559. Seat of district court from 1814, and district council until 1972. Two round towers. Extensions on either side with stair towers. The building was protected by a moat and bridge on the town side, and on the outside by the town wall, some of which can still be seen. In 1725, a girl called Maria Sophia was born here in the castle. She was the daughter of the Oberamtmann (Bailliff) Christoph Philipp von Erthal and his wife Maria Eva.

After the death of her biological mother, her father married the beautiful but rather vain Claudia Elisabeth von Reichenstein. He gave his second wife a beautiful mirror made at the "Lohrer Spiegelmanufaktur" mirror and glassworks in the town. It can be admired in the castle to this day. This mirror bears an inscription that "talks" to the beholder. **Who else could this girl have been if not Snow White?**

Today the castle houses the Spessart Museum. Snow White has her very own presentation in Room 113, containing all sorts of details. There are also exhibitions on "People and the Forest", "Hunting and Forestry", "Robbers", and "Glass and Mirrors".

- Castle wall: steel silhouette of Snow White.
- Schlossplatz 2: former School of Silviculture/Forestry Office from 16<sup>th</sup> – 18<sup>th</sup> centuries.
- Schlossplatz 5: former wine cellars, built in 14<sup>th</sup> century as a stately cooperage. Tourist Information on ground floor.
- Schlossplatz 3: New Town Hall, built in 1986 on foundations of former tithe barn. Previous buildings on site: castle stables, prison (1863 – 1949).



## Area V "Oberes Tor" (Upper gate)

Position of former "upper gate" can be seen in the cobbles.

- Hauptstrasse 52: former district court. Splendid Classical building dating from 1842. Police station since 1982.
- Grafen-von-Rieneckstrasse 5: former infirmary, built in 1870, including church of St. John the Baptist, with cast-iron spire. On eastern side: sculpture of Good Samaritan, by Hermann Amrhein.

## Area VI Tanners' and dyers' district along old stream, park in former moat

- Town wall (14th century).
- Former Classical Grammar School, built 1904 in Neo-Renaissance style. "Realschule" (secondary school) since 1975.
- Above this to the right is the State School of Forestry with its "Parade Square", 1938.

Corner of Stadtmühlgasse/ Turmstrasse:

- Fischbrunnen ("Fish fountain").

## Area VII Boatmen and fishermen's district

- "Bayersturm": main watchtower on ramparts (13th/14th centuries), named after a towerkeeper's family. Sturdy, six storeys, long-and-short-work corners, Baroque dome, 40 m high. Includes towerkeeper's flat. Open weekly on Sat. & Sun. and on all public holidays from 10 am - noon from Easter to October.
- Fisherman's fountain (1983): funded by inhabitants of "Main District" to celebrate town jubilee.
- Opposite: former synagogue 1867-1941.
- Between Fischergasse and Steinmühlplatz:
- Birthplace of Hans Gottwald von Lohr (1480 – 1542), pupil of Riemenscheider.

